



# SAP 14 Polyclonal Antibody

<b>Catalog No</b>	YP-Ab-02002
<b>Isotype</b>	IgG
<b>Reactivity</b>	Human;Mouse
<b>Applications</b>	WB;ELISA
<b>Gene Name</b>	SF3B14
<b>Protein Name</b>	Pre-mRNA branch site protein p14
<b>Immunogen</b>	The antiserum was produced against synthesized peptide derived from human SF3B14. AA range:76-125
<b>Specificity</b>	SAP 14 Polyclonal Antibody detects endogenous levels of SAP 14 protein.
<b>Formulation</b>	Liquid in PBS containing 50% glycerol, 0.5% BSA and 0.02% sodium azide.
<b>Source</b>	Polyclonal, Rabbit,IgG
<b>Purification</b>	The antibody was affinity-purified from rabbit antiserum by affinity-chromatography using epitope-specific immunogen.
<b>Dilution</b>	Western Blot: 1/500 - 1/2000. ELISA: 1/40000. Not yet tested in other applications.
<b>Concentration</b>	1 mg/ml
<b>Purity</b>	≥90%
<b>Storage Stability</b>	-20°C/1 year
<b>Synonyms</b>	SF3B14; CGI-110; HSPC175; HT006; Pre-mRNA branch site protein p14; SF3b 14 kDa subunit
<b>Observed Band</b>	14kD
<b>Cell Pathway</b>	Nucleus .
<b>Tissue Specificity</b>	Hypothalamus,Testis,Umbilical cord blood,Uterus,
<b>Function</b>	function:Necessary for the splicing of pre-mRNA. Directly contacts the pre-mRNA branch site adenosine for the first catalytic step of splicing. Enters the spliceosome and associates with the pre-mRNA branch site as part of the 17S U2 or, in the case of the minor spliceosome, as part of the 18S U11/U12 snRNP complex, and thus may facilitate the interaction of these snRNP with the branch sites of U2 and U12 respectively.,similarity:Contains 1 RRM (RNA recognition motif) domain.,subunit:Interacts with SF3B1/SF3b155 in the region of amino acids 255-424. Interacts to a lesser extent with SF3b130.,
<b>Background</b>	This gene encodes a 14 kDa protein subunit of the splicing factor 3b complex. Splicing factor 3b associates with both the U2 and U11/U12 small nuclear ribonucleoprotein complexes (U2 snRNP) of spliceosomes. This 14 kDa protein interacts directly with subunit 1 of the splicing factor 3b complex. This 14 kDa protein also interacts directly with the adenosine that carries out the first



transesterification step of splicing at the pre-mRNA branch site. [provided by RefSeq, Jul 2008],

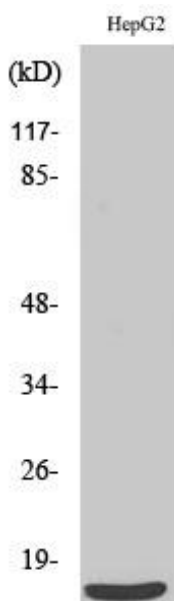
**matters needing attention**

Avoid repeated freezing and thawing!

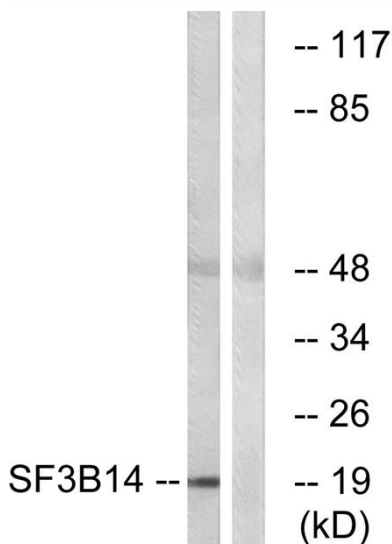
**Usage suggestions**

This product can be used in immunological reaction related experiments. For more information, please consult technical personnel.

**Products Images**



Western Blot analysis of various cells using SAP 14 Polyclonal Antibody cells nucleus extracted by Minute TM Cytoplasmic and Nuclear Fractionation kit (SC-003, Inventbiotech, MN, USA).



Western blot analysis of lysates from HepG2 cells, using SF3B14 Antibody. The lane on the right is blocked with the synthesized peptide.